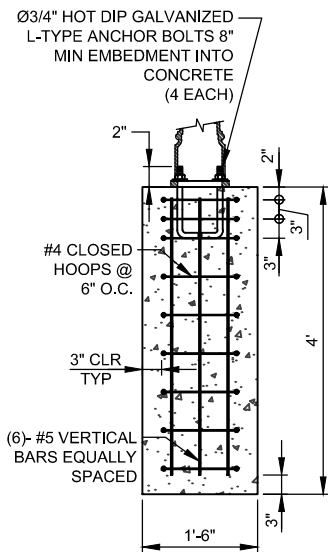
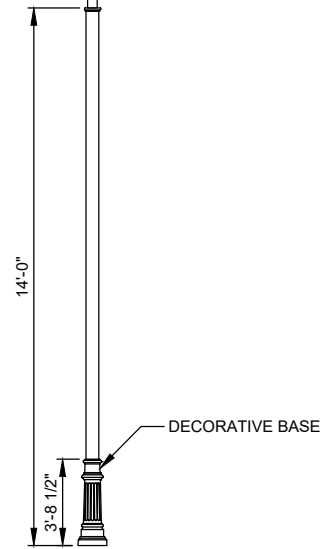
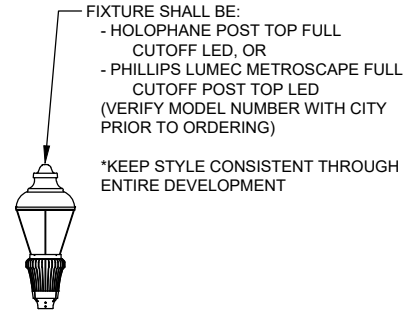


BASE PLATE DETAIL



CONCRETE BASE



NOTES:

1. RESIDENTIAL POLES SHALL BE FLUTED OR SMOOTH ALUMINUM WITH BLACK FINISH.
2. LOADING CAPACITY OF POLE SHALL BE 100 POUND RATED FOR A STEADY WIND OF 90 MPH MINIMUM.
3. CONCRETE BASES SHALL BE BACKFILLED WITH SUITABLE MATERIAL COMPACTED TO 95 PERCENT.
4. CONCRETE BASES SHALL INCLUDE CONDUIT AND GROUNDING WIRE PER HEBER LIGHT & POWER REQUIREMENTS.
5. CONCRETE COMPRESSIVE STRENGTH (f_c) SHALL BE 4000 PSI.
6. THE TOP OF CONCRETE BASES SHALL BE BETWEEN 1 AND 3 INCHES ABOVE GRADE.

STREET LIGHTING

HEBER CITY

STREETS-12

DATE:	JUNE 2021
SCALE:	N.T.S.
75 NORTH MAIN STREET HEBER CITY, UTAH 84032 (435) 654-0757	

