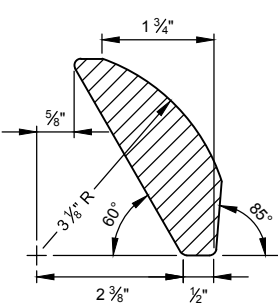
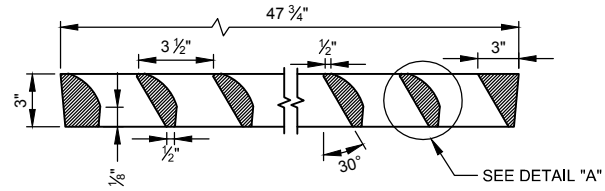


GRATE

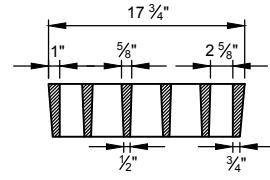
WEIGHT: 266 LBS.



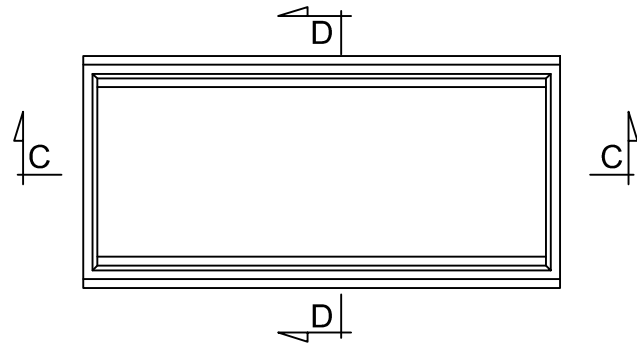
DETAIL "A"



SECTION A-A

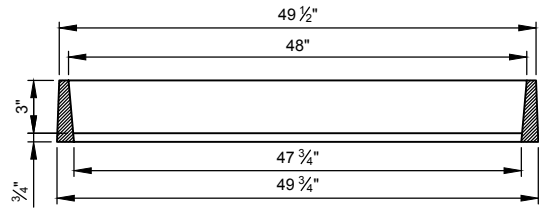
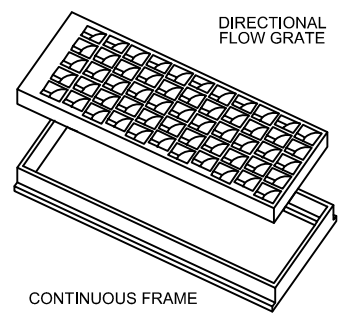


SECTION B-B

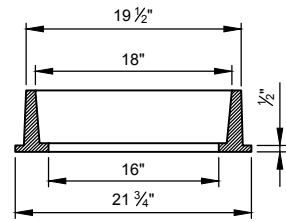


FRAME

WEIGHT: 160 LBS.



SECTION C-C



SECTION D-D

NOTES:

1. ALL DIMENSIONS ARE INCHES (in) UNLESS OTHERWISE NOTED.
2. GRATE AND FRAME MAY BE FURNISHED IN EITHER DUCTILE IRON (ASTM A-536 GRADE 60) OR CAST GRAY IRON: AASHTO M-105, CLASS 30 B (ASTM A-48).
3. INSTALLATION REQUIRES SUPPORT UNDER LONGITUDINAL AXIS OF FRAME. ORIENT GRATE WITH DIRECTION OF FLOW.
4. GRATE & FRAME SHALL BE D&L I-1803 OR APPROVED EQUAL.

DESIGN DATA:

MS 18 (HS-20) OR INTERSTATE ALTERNATE LOADING IN ACCORDANCE WITH CURRENT AASHTO AND INTERIM SPECIFICATIONS.

DUCTILE IRON AND STRUCTURAL STEEL: $f_s=138$ MPa

GRATE AND FRAME

V:\ENGR\Stds\StdsSpec\StdsSpec 2019\Drawg Files\STORM DRAIN-2.dwg - Grate Frame - 2/06/2019 11:28am. rfrnk

HORROCKS ENGINEERS
 728 WEST 100 SOUTH #2
 HEBER CITY, UTAH 84032
 (435) 654-2226

DATE: FEBRUARY 2019
 SCALE: N.T.S.
 75 NORTH MAIN STREET
 HEBER CITY, UTAH 84032
 (435) 654-0757

HEBER CITY
 HEART OF THE WASATCH BACK

HEBER CITY STANDARD DRAWING
 STORM DRAIN-2